



ECONOMIC INDICATORS

NEW SOUTH WALES

EMBARGO: 11:30AM (CANBERRA TIME) WED 15 MAR 2000

C O N T E N T S

	<i>Page</i>
Notes	2
NSW overview.	3
Main features	4
List of tables and graphs	5
Population	6
Labour	7
Production	10
Building	11
Retail trade	12
New motor vehicle registrations	13
Tourism	14
Consumer and producer price indexes.	15
Finance	16
State Government finance	17
Investment.	18
International trade.	19

- For further information about these and related statistics, contact Bill Markham on Sydney 02 9268 4376 or email bill.markham@abs.gov.au or Client Services in any ABS office as shown on the back cover of this publication.

NOTES

FORTHCOMING ISSUES

<i>ISSUE</i>	<i>ISSUE DATE</i>
April 2000	17 April 2000
May 2000	15 May 2000
June 2000	15 June 2000
July 2000	17 July 2000
August 2000	15 August 2000
September 2000	15 September 2000

GENERAL

This publication provides information on a wide range of economic indicators which are the latest available at the time of publication. In a number of cases, figures appearing in this summary are preliminary and are subject to revision in subsequent issues.

SEASONAL ADJUSTMENT AND TREND ESTIMATION

Seasonal adjustment is a means of removing the estimated effects of normal seasonal variation from a series so that the effects of other variations on that series can be more clearly recognised. Seasonal adjustment does not aim to remove the irregular or non-seasonal influences which may be present. This means that movements of seasonally adjusted estimates may not be reliable indicators of trend behaviour. Smoothing seasonally adjusted series produces a measure of the underlying trend by reducing the impact of the irregular component of the series. This smoothing technique does result in revisions to the most recent estimates as additional observations become available. For an explanation of seasonal adjustment derivation, refer to the publication *Seasonally Adjusted Indicators* (Cat. no. 1308.0).

STANDARD ERRORS OF ESTIMATES

One measure of the variability which occurs as a result of surveying only samples of the total business population is the standard error. There are about two chances in three that a survey estimate is within one standard error of the figure that would have been obtained if all businesses had been included, and about 19 chances in 20 that it is within two standard errors. The standard error can also be expressed as a percentage of the estimate and this is known as the relative standard error (RSE).

For detailed explanatory notes and definitions for the items shown in this publication, readers are referred to the specific ABS publications.

Current publications produced by the ABS are listed in the *Catalogue of Publications* (Cat. no. 1101.0). A *Release Advice* (Cat. no. 1105.0) is issued on Tuesdays and Fridays which lists publications to be released in the next few days. These publications are available from any ABS office.

SYMBOLS AND OTHER USAGES

kWh	kilowatt hour
teraJ	terajoule
n.a.	not available
n.p.	not available for publication but included in totals where applicable
n.y.a	not yet available
r	figure or series revised since previous issue
. .	not applicable
—	nil or rounded to zero
—	break in continuity of series (where a line is drawn across a column between two consecutive figures)

Gregory W. Bray
Regional Director
New South Wales

NSW OVERVIEW

EMPLOYMENT	Employment in NSW remained constant in January 2000 at a seasonally adjusted figure of 2,971,700. National employment in January 2000 was 8,900,900.
UNEMPLOYMENT	Unemployment in NSW fell by 6.7% to a seasonally adjusted figure of 187,200 in January 2000. The unemployment rate fell from 6.3% in December 1999 to 5.9% in January 2000. The national unemployment rate was 6.8% in January 2000.
INDUSTRIAL DISPUTES	In November 1999 there were 121,300 working days lost due to industrial disputes which accounted for over 80% of working days lost nationally.
BUILDING APPROVALS	The seasonally adjusted number of new dwelling units approved for NSW in December 1999 increased 4.3% from the previous month to 4,232.
RETAIL	In seasonally adjusted terms, total retail sales for NSW in December 1999 was \$4,217.3 million. For November 1999, the figure was \$4,162.3 million.
NEW MOTOR VEHICLE REGISTRATIONS	New motor vehicle registrations for NSW in seasonally adjusted terms in December 1999 increased by 7.6% on the previous month to 24,074.
FINANCE	The seasonally adjusted value of housing finance commitments for owner occupation in NSW in December 1999 was \$2,789 million, down 3.5% on the previous month but an overall increase of 34.8% since December 1998.
IMPORTS AND EXPORTS	The customs value of imports into NSW during December 1999 was \$3,982 million, a decrease of 6.5% on November 1999. The value of exports (FOB) from NSW in December 1999 was \$1,561 million, a fall of 0.7% over the same period.

MAIN FEATURES

FINANCE

The seasonally adjusted estimate for the value of housing finance commitments in NSW was \$2,789 million in December 1999, a fall of 3.5% from November 1999 but an overall increase of 34.8% since December 1998. Nationally, the seasonally adjusted value of lending commitments for housing finance fell by 4.2% to \$6,620 million in December 1999 but was 30.8% higher than in December 1998.

In original terms, total commitments in NSW in December 1999 rose by 35.5% to \$2,669 million, compared to December 1998. Over the same period, there were increases in all contributing indicators, with the exception of commitments for the purchase of newly erected dwellings which fell by 6.4% to \$90 million. Commitments to purchase established dwellings increased 40.9% to \$1,892 million and commitments for the construction of dwellings rose by 16.6% to \$275 million. Commitments for refinancing also rose, up 39.9% to \$413 million.

The average borrowing size in NSW in December 1999 was \$169,300, up 4.8% on the average of \$161,600 recorded for December 1998.

BUILDING APPROVALS

In seasonally adjusted terms, the number of new dwelling units approved in NSW for December 1999 was 4,232 (including 3,032 new houses). This represented an increase of 4.3% on the previous month. Compared to December 1998, the number of new dwellings approved decreased by 4.9%. Nationally, the figure was 15,120 (including 11,983 new houses), a rise of 2.1% on November 1999 and 13.9% higher than the figure a year ago.

The seasonally adjusted value of new residential building for NSW in December 1999 was \$554.2 million, a rise of 8.2% over November 1999. Nationally, there was a rise of 9.4% on the previous month and an increase of 29.6% compared to December 1998.

In original terms, the value of total building in NSW was \$936.4 million, a fall of 3.0% from November 1999 but 11.4% higher than the figure a year ago. Nationally, the figure (\$2,863.0 million) showed a decrease of 9.9% and an increase of 21.9% over the same periods.

LIST OF TABLES AND GRAPHS

page

POPULATION	1 Estimated resident population, NSW	6
LABOUR	2 Labour data, latest time period, NSW and Australia	7
	3 Labour data, time series, NSW	7
	4 Labour force status of the civilian population, NSW	8
	5 Graph: Unemployment rates, NSW and Australia	9
	6 Coal, electricity and gas production, latest time period, NSW and Australia	10
PRODUCTION	7 Coal, electricity and gas production, time series, NSW	10
BUILDING	8 Building approvals, latest time period, NSW and Australia	11
	9 Building approvals, time series, NSW	11
RETAIL TRADE	10 Turnover of retail establishments, latest time period, NSW and Australia	12
	11 Turnover of retail establishments, seasonally adjusted, time series, NSW	12
NEW MOTOR VEHICLE REGISTRATIONS	12 New motor vehicle registrations, latest time period, NSW and Australia	13
	13 New motor vehicle registrations, seasonally adjusted, time series, NSW	13
TOURISM	14 Accommodation Establishments, latest time period, NSW and Australia	14
	15 Accommodation Establishments, time series, Sydney and NSW	14
	16 Graph: Hotels, motels etc., monthly room occupancy rates, Sydney Tourism Region and NSW	14
CONSUMER AND PRODUCER PRICE INDEXES	17 Consumer and producer price indexes, latest time period, NSW and Australia	15
	18 Consumer and producer price indexes, time series, NSW	15
	19 Graph: Consumer Price Index, Sydney and average of eight capital cities	15
FINANCE	20 Finance commitments, latest time period, NSW and Australia	16
	21 Finance commitments, time series, NSW	16
STATE GOVERNMENT FINANCE	22 Government finance, budget sector, time series, NSW	17
INVESTMENT	23 Actual private new fixed capital expenditure, latest time period, NSW and Australia, trend	18
	24 Actual private new fixed capital expenditure, time series, NSW, trend	18
	25 Graph: Actual private new fixed capital expenditure by type of asset, trend estimate, NSW	18
INTERNATIONAL TRADE	26 Imports and exports, latest time period, NSW and Australia	19
	27 Imports and exports, time series, NSW	19

1 ESTIMATED RESIDENT POPULATION—NSW

	Estimated resident population at end of period			Increase during period			Mean estimated resident population for year ended	
	Males	Females	Persons	Natural increase(a)	Net estimated migration	Total increase(b)	30 June	31 December
	'000	'000	'000	'000	'000	'000	'000	'000
1996	3 098.9	3 143.1	6 241.9	41.8	31.3	73.1	6 167.2	6 204.2
1997	3 128.9	3 171.5	6 300.5	40.9	17.6	58.5	6 240.9	6 276.1
1998	3 168.3	3 207.8	6 376.2	40.5	35.2	75.7	6 307.1	6 344.3
1998								
March qtr	3 139.1	3 180.4	6 319.6	10.3	8.8	19.1
June qtr	3 146.3	3 187.2	6 333.5	9.9	4.1	14.0
September qtr	3 157.3	3 197.6	6 354.9	8.2	13.2	21.4
December qtr	3 168.3	3 207.8	6 376.2	12.1	9.1	21.2
1999								
March qtr	3 179.0	3 218.2	6 397.2	9.1	11.9	21.0
June qtr	3 186.9	3 224.8	6 411.7	9.7	4.8	14.5

(a) Excess of live births over deaths.

(b) For dates prior to June 1996, differences between the total increase shown and the sum of the natural increase and net estimated migration arise from retrospective adjustments to population estimates (which are made after each Census) to compensate for any intercensal discrepancy. A description of intercensal discrepancy is contained in the ABS *Information Paper: Demographic Estimates—Concepts, Sources and Methods* (Cat. no. 3228.0).

Source: Australian Demographic Statistics (Cat. no. 3101.0).

2 LABOUR—NSW AND AUSTRALIA

	Unit	Latest period	New South Wales			Australia		
			Latest figure	Change from prior period	Change from same period prior year	Latest figure	Change from prior period	Change from same period prior year
				%	%		no.	%
Employed persons (seasonally adjusted)	'000	Jan 00	2 971.7	0.0	3.0	8 900.9	-0.3	2.6
Unemployed persons (seasonally adjusted)	'000	Jan 00	187.2	-6.7	-1.3	650.7	-3.0	-7.6
Labour force (seasonally adjusted)	'000	Jan 00	3 158.9	-0.4	1.9	9 551.6	-0.5	1.8
Participation rate (seasonally adjusted)	%	Jan 00	61.7	-0.6	0.3	63.2	-0.6	0.3
Unemployment rate (seasonally adjusted)	%	Jan 00	5.9	-6.3	-14.5	6.8	-2.9	-9.3
Industrial disputes—working days lost	'000	Nov 99	121.3	626.3	1 044.3	149.6	272.1	289.6
Job vacancies	'000	Nov 99	36.9	-23.6	22.2	103.2	-6.2	6.2
Average weekly employee earnings—full-time adult ordinary time earnings (seasonally adjusted)	\$	Aug 99	788.0	-0.5	3.7	753.2	0.3	2.1

Source: Average Weekly Earnings, States and Australia (Cat. no. 6302.0), Industrial Disputes, Australia (Cat. no. 6321.0), Job Vacancies and Overtime, Australia (Cat. no. 6354.0), Labour Force, Australia, Preliminary (Cat. no. 6202.0).

3 LABOUR—NSW

	Seasonally adjusted						
	Employed persons	Unemployed persons	Labour force	Participation rate	Unemployment rate	Industrial disputes (working days lost)	Job vacancies
	'000	'000	'000	%	%	'000	'000
1998							
November	2 859.4	238.2	3 097.6	61.6	7.7	10.6	30.2
December	2 891.5	211.5	3 103.0	61.6	6.8	28.8	..
1999							
January	2 884.6	215.2	3 099.8	61.5	6.9	2.7	..
February	2 906.0	208.7	3 114.7	61.7	6.7	40.3	30.5
March	2 903.5	219.8	3 123.3	61.8	7.0	7.8	..
April	2 901.0	216.1	3 117.1	61.6	6.9	2.1	..
May	2 918.7	203.5	3 122.2	61.6	6.5	3.1	37.5
June	2 929.1	200.0	3 129.1	61.7	6.4	3.9	..
July	2 942.5	191.3	3 133.8	61.7	6.1	23.0	..
August	2 933.2	212.8	3 146.0	61.9	6.8	32.0	48.3
September	2 950.9	218.6	3 169.5	62.3	6.9	33.8	..
October	2 974.4	188.3	3 162.7	62.0	6.0	16.7	..
November	2 955.6	175.6	3 131.2	61.3	5.6	121.3	36.9
December	2 972.5	200.6	3 173.1	62.1	6.3	n.y.a.	..
2000							
January	2 971.7	187.2	3 158.9	61.7	5.9	n.y.a.	..

Source: Industrial Disputes, Australia (Cat. no. 6321.0), Job Vacancies and Overtime, Australia (Cat. no. 6354.0), Labour Force, Australia, Preliminary (Cat. no. 6202.0).

4 LABOUR FORCE STATUS, NSW—ORIGINAL

	<i>Employed</i>		<i>Unemployed</i>		<i>Labour force</i>	<i>Not in labour force</i>	<i>Civilian population aged 15 years and over</i>	<i>Unemployment rate(a)</i>	<i>Participation rate(b)</i>
	<i>Full-time workers</i>	<i>Total</i>	<i>Looking for full-time work</i>	<i>Total</i>					
	'000	'000	'000	'000					
MALES									
January									
1995	1 384.2	1 543.2	147.0	165.8	1 709.0	634.4	2 343.4	9.7	72.9
1996	1 432.9	1 575.8	136.0	156.8	1 732.6	644.8	2 377.4	9.0	72.9
1997	1 437.2	1 604.7	132.0	150.5	1 755.3	655.2	2 410.5	8.6	72.8
1998									
November	1 441.2	1 633.0	112.0	129.4	1 762.4	709.1	2 471.5	7.3	71.3
December	1 467.6	1 658.3	107.6	121.5	1 779.8	695.0	2 474.7	6.8	71.9
1999									
January	1 447.1	1 633.0	124.6	140.8	1 773.8	703.8	2 477.5	7.9	71.6
February	1 453.4	1 644.9	113.5	133.1	1 778.0	702.4	2 480.3	7.5	71.7
March	1 454.3	1 661.9	102.9	126.1	1 788.0	695.2	2 483.1	7.1	72.0
April	1 456.1	1 657.8	95.6	115.5	1 773.3	713.3	2 486.6	6.5	71.3
May	1 460.0	1 662.7	93.3	110.1	1 772.8	717.2	2 490.0	6.2	71.2
June	1 459.4	1 668.1	91.6	108.0	1 776.1	717.3	2 493.4	6.1	71.2
July	1 491.8	1 687.4	83.2	101.3	1 788.7	707.7	2 496.4	5.7	71.7
August	1 464.1	1 662.6	95.9	115.3	1 777.8	721.6	2 499.4	6.5	71.1
September	1 502.7	1 696.2	97.6	124.8	1 820.9	681.5	2 502.4	6.9	72.8
October	1 504.7	1 688.4	87.4	105.5	1 793.9	712.6	2 506.4	5.9	71.6
November	1 498.9	1 681.8	81.4	95.1	1 777.0	733.5	2 510.5	5.4	70.8
December	1 530.2	1 711.0	95.2	116.1	1 827.0	687.5	2 514.5	6.4	72.7
2000									
January	1 497.6	1 680.2	104.8	119.9	1 800.1	717.6	2 517.7	6.7	71.5
FEMALES									
January									
1995	692.3	1 125.9	74.5	107.8	1 233.7	1 196.4	2 430.1	8.7	50.8
1996	734.0	1 177.3	69.5	96.5	1 273.8	1 192.9	2 466.7	7.6	51.6
1997	731.6	1 184.0	74.4	105.8	1 289.8	1 212.3	2 502.1	8.2	51.5
1998									
November	733.3	1 235.5	61.0	96.8	1 332.3	1 227.2	2 559.6	7.3	52.1
December	762.7	1 276.6	57.4	86.6	1 363.3	1 199.2	2 562.5	6.4	53.2
1999									
January	739.5	1 218.0	62.6	90.1	1 308.0	1 257.1	2 565.1	6.9	51.0
February	738.4	1 236.4	67.4	104.5	1 340.9	1 226.8	2 567.7	7.8	52.2
March	728.8	1 238.3	64.3	108.7	1 347.0	1 223.3	2 570.2	8.1	52.4
April	726.0	1 242.6	62.5	98.5	1 341.2	1 232.0	2 573.2	7.3	52.1
May	729.5	1 250.2	56.8	90.0	1 340.3	1 235.9	2 576.1	6.7	52.0
June	746.9	1 264.6	52.3	81.5	1 346.2	1 232.9	2 579.1	6.1	52.2
July	754.9	1 265.7	53.2	76.5	1 342.2	1 239.8	2 582.0	5.7	52.0
August	723.4	1 237.1	54.9	86.7	1 323.8	1 261.2	2 584.9	6.5	51.2
September	749.9	1 285.6	61.3	97.6	1 383.2	1 204.7	2 587.9	7.1	53.4
October	767.2	1 289.1	51.3	77.1	1 366.2	1 225.1	2 591.3	5.6	52.7
November	756.5	1 283.3	50.5	71.8	1 355.1	1 239.7	2 594.8	5.3	52.2
December	788.4	1 307.0	54.7	80.9	1 387.9	1 210.4	2 598.3	5.8	53.4
2000									
January	776.9	1 257.2	55.3	80.7	1 337.9	1 262.8	2 600.7	6.0	51.4

For footnotes see end of table.

4 LABOUR FORCE STATUS, NSW—ORIGINAL—continued

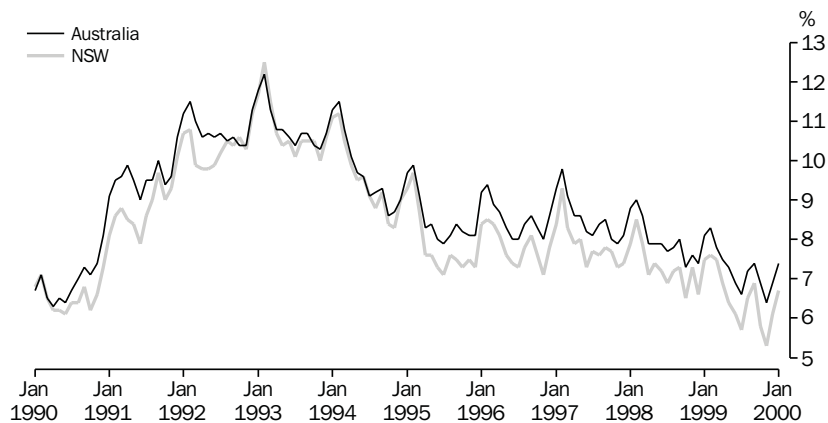
	<i>Employed</i>		<i>Unemployed</i>		<i>Labour force</i>	<i>Not in labour force</i>	<i>Civilian population aged 15 years and over</i>	<i>Unemployment rate(a)</i>	<i>Participation rate(b)</i>
	<i>Full-time workers</i>	<i>Total</i>	<i>Looking for full-time work</i>	<i>Total</i>					
	'000	'000	'000	'000					
PERSONS									
January									
1995	2 076.5	2 669.1	221.6	273.6	2 942.7	1 830.8	4 773.5	9.3	61.6
1996	2 166.9	2 753.1	205.6	253.3	3 006.4	1 837.7	4 844.2	8.4	62.1
1997	2 168.9	2 788.8	206.4	256.3	3 045.1	1 867.5	4 912.6	8.4	62.0
1998									
November	2 174.5	2 868.5	173.0	226.3	3 094.7	1 936.4	5 031.1	7.3	61.5
December	2 230.2	2 934.9	165.0	208.1	3 143.1	1 894.2	5 037.2	6.6	62.4
1999									
January	2 186.6	2 850.9	187.1	230.9	3 081.8	1 960.9	5 042.6	7.5	61.1
February	2 191.8	2 881.3	180.9	237.5	3 118.8	1 929.2	5 048.0	7.6	61.8
March	2 183.2	2 900.2	167.2	234.8	3 134.9	1 918.4	5 053.4	7.5	62.0
April	2 182.1	2 900.4	158.1	214.0	3 114.5	1 945.3	5 059.8	6.9	61.6
May	2 189.6	2 912.9	150.2	200.1	3 113.1	1 953.1	5 066.1	6.4	61.4
June	2 206.3	2 932.7	143.9	189.6	3 122.3	1 950.3	5 072.5	6.1	61.6
July	2 246.7	2 953.2	136.4	177.8	3 131.0	1 947.5	5 078.5	5.7	61.7
August	2 187.6	2 899.6	150.8	202.0	3 101.6	1 982.8	5 084.4	6.5	61.0
September	2 252.6	2 981.8	158.9	222.4	3 204.2	1 886.2	5 090.3	6.9	62.9
October	2 271.8	2 977.5	138.6	182.6	3 160.1	1 937.7	5 097.8	5.8	62.0
November	2 255.4	2 965.1	131.9	167.0	3 132.1	1 973.2	5 105.3	5.3	61.3
December	2 318.6	3 017.9	149.9	197.0	3 214.9	1 897.9	5 112.8	6.1	62.9
2000									
January	2 274.5	2 937.4	160.1	200.6	3 138.0	1 980.4	5 118.4	6.4	61.3

(a) The number of unemployed in each group expressed as a percentage of the labour force in the same group.

(b) The labour force in each group expressed as a percentage of the civilian population aged 15 years and over in the same group.

Source: Labour Force, Australia, Preliminary (Cat. no. 6202.0).

5 UNEMPLOYMENT RATE—ORIGINAL



Source: Labour Force, Australia, Preliminary (Cat. no. 6202.0).

6 COAL, ELECTRICITY AND GAS PRODUCTION, NSW AND AUSTRALIA—ORIGINAL

	Unit	Latest period	New South Wales				Australia		
			Latest figure	Change	Change	Latest figure	Change	Change	
				from prior period	from same period prior year		from prior period	from same period prior year	
			%	%		%	%		
Raw coal won—									
Underground	'000 tonnes	Nov 99	4 340	7.3	8.8	7 098	0.6	40.7	
Open cut	'000 tonnes	Nov 99	6 213	2.1	-10.4	17 530	1.2	11.3	
Total	'000 tonnes	Nov 99	10 553	4.2	-3.4	24 628	1.0	18.5	
Electricity	mill. kWh	Dec qtr 99	15 284	-10.0	0.4	44 591	-4.7	3.1	
Gas(a)	teraJ	Dec qtr 99	26 029	-20.0	4.0	158 557	-14.7	0.7	

(a) Available for issue through mains. Includes ACT.

Source: Joint Coal Board for NSW and Australia from ABS unpublished statistics, Manufacturing Production, Australia (Cat. no. 8301.0).

7 COAL, ELECTRICITY AND GAS PRODUCTION, NSW—ORIGINAL

	Raw coal won					Electricity	Gas(a)
	Underground	Open cut	Total	Electricity	Gas(a)		
	'000 tonnes	'000 tonnes	'000 tonnes				
1996-97	54 642	69 036	123 678	62 788	109 284		
1997-98	58 299	75 710	134 009	61 804	111 665		
1998-99	51 158	80 209	131 367	63 743	110 092		
1998							
October	4 732	7 131	11 863	—	—		
November	3 988	6 931	10 919	15 227	25 039		
December	3 346	6 500	9 846	—	—		
1999							
January	3 273	6 159	9 432	—	—		
February	3 848	6 913	10 761	15 609	22 367		
March	4 921	7 827	12 748	—	—		
April	3 525	5 768	9 293	—	—		
May	4 664	6 303	10 967	16 365	30 428		
June	5 209	7 448	12 657	—	—		
July	4 137	6 270	10 407	—	—		
August	3 820	6 306	10 126	16 977	32 555		
September	5 552	8 215	13 767	—	—		
October	r4 045	r6 084	r10 129	—	—		
November	4 340	6 213	10 553	15 284	26 029		
December	n.y.a.	n.y.a.	n.y.a.	—	—		

(a) Available for issue through mains. Includes ACT.

Source: Joint Coal Board, Manufacturing Production, Australia (Cat. no. 8301.0).

8 BUILDING APPROVALS—NSW AND AUSTRALIA

	Unit	Latest period	Latest figure	New South Wales		Australia		
				Change from prior period	Change from same period prior year	Change from prior period	Change from same period prior year	
				%	%	%	%	
Number of dwelling units(a) (seasonally adjusted)—								
New houses	no.	Dec 99	3 032	11.6	28.6	11 983	10.4	39.0
Total	no.	Dec 99	4 232	4.3	-4.9	15 120	2.1	13.9
Value of new residential building (seasonally adjusted)	\$m	Dec 99	554.2	8.2	4.4	1 921.5	9.4	29.6
Value of alterations and additions to residential building(b) (seasonally adjusted)	\$m	Dec 99	114.6	11.8	24.7	288.7	13.3	17.4
Value of non-residential building(c) (original)	\$m	Dec 99	277.1	5.4	18.0	826.9	-16.5	11.7
Value of all building (original)	\$m	Dec 99	936.4	-3.0	11.4	2 863.0	-9.9	21.9

(a) Includes dwelling units approved as part of the construction of non-residential building and alterations and additions to existing buildings (including conversions to dwelling units).

(b) Valued at \$10,000 or more. Includes conversions of existing buildings into residential buildings.

(c) Valued at \$50,000 or more.

Source: *Building Approvals, Australia (Cat. no. 8731.0)*.

9 BUILDING APPROVALS—NSW

	Number of dwelling units(a), seasonally adjusted				Value of building approvals			
	New houses		Total		Seasonally adjusted		Original	
	Private sector	Total	Private sector	Total	New residential building	Alterations and additions to residential building(b)	Non-residential building(c)	All building
	no.	no.	no.	no.	\$m	\$m	\$m	\$m
1996-97	5 169.2	11 356.6
1997-98	5 910.9	13 348.6
1998-99	4 534.9	11 872.4
1998								
October	2 336	2 346	4 062	4 225	488.4	88.7	313.5	862.1
November	2 272	2 337	4 109	4 420	535.4	92.9	461.5	1 180.1
December	2 333	2 358	4 274	4 451	530.7	91.9	234.8	840.5
1999								
January	2 237	2 262	4 182	4 286	503.7	92.5	297.4	757.2
February	2 413	2 428	4 052	4 126	508.7	104.8	432.0	996.2
March	2 459	2 476	4 141	4 277	497.8	90.0	395.5	1 013.6
April	2 266	2 275	4 194	4 265	482.8	89.1	207.3	781.6
May	2 582	2 610	4 174	4 252	527.0	108.5	424.4	1 141.4
June	2 452	2 464	4 478	4 548	605.4	91.1	503.7	1 171.2
July	2 725	2 737	4 414	4 578	605.4	105.2	523.2	1 258.8
August	2 537	2 539	4 949	5 024	648.7	117.8	505.7	1 269.1
September	2 284	2 327	3 990	4 052	496.3	112.9	259.1	922.7
October	2 673	2 697	4 311	4 560	570.8	119.9	264.5	882.1
November	2 701	2 717	3 944	4 056	512.3	102.5	263.0	965.7
December	3 012	3 032	4 188	4 232	554.2	114.6	277.1	936.4

(a) Includes dwelling units approved as part of the construction of non-residential building and alterations and additions to existing buildings (including conversions to dwelling units).

(b) Valued at \$10,000 or more. Includes conversions of existing buildings into residential buildings.

(c) Valued at \$50,000 or more.

Source: *Building Approvals, Australia (Cat. no. 8731.0)*.

10 TURNOVER OF RETAIL ESTABLISHMENTS(a), NSW AND AUSTRALIA—SEASONALLY ADJUSTED

	Latest period	New South Wales			Australia		
		Latest figure	Change from prior period	Change from same period prior year	Latest figure	Change from prior period	Change from same period prior year
		\$m	%	%	\$m	%	%
Food retailing	Dec 99	1 624.4	3.6	8.1	4 928.9	1.5	7.5
Department stores	Dec 99	373.5	-2.0	8.4	1 078.3	-1.2	6.4
Clothing and soft good retailing	Dec 99	303.6	-2.5	6.8	815.6	-2.3	7.9
Household good retailing	Dec 99	418.3	-5.3	12.6	1 328.5	-3.1	10.0
Recreational good retailing	Dec 99	199.6	1.8	3.5	608.4	-2.1	5.0
Other retailing	Dec 99	444.7	1.7	15.0	1 250.6	-2.2	10.3
Hospitality and services	Dec 99	853.2	3.2	10.8	2 056.8	-0.2	13.0
Total value of retail sales	Dec 99	4 217.3	1.3	9.5	12 067.0	-0.4	8.8

(a) The figures shown are derived from a monthly survey of retail establishments. Excludes motor vehicle, boat and caravan dealers, service stations, smash repairers, tyre and battery retailers, bread and milk vendors, footwear repairers and electrical appliance repairers n.e.c. Retail establishments which do not have employees are excluded from the survey. Turnover includes retail sales, wholesale sales, takings from repairs, meals and hiring of goods; and commissions from agency activity (e.g. commissions received from collecting dry cleaning, selling lottery tickets etc.).

Source: Retail Trade, Australia (Cat. no. 8501.0).

11 TURNOVER OF RETAIL ESTABLISHMENTS(a), NSW—SEASONALLY ADJUSTED

	Food retailing	Department stores	Clothing and soft good retailing	Household good retailing	Recreational good retailing	Other retailing	Hospitality and services	Total
	\$m	\$m	\$m	\$m	\$m	\$m	\$m	\$m
1998								
October	1 527.1	348.7	302.1	384.8	195.9	379.7	768.7	3 907.1
November	1 512.0	365.1	289.7	382.5	195.1	381.9	793.7	3 920.0
December	1 503.3	344.4	284.2	371.5	192.8	386.6	769.7	3 852.5
1999								
January	1 548.0	387.7	291.7	408.0	202.2	399.5	840.2	4 077.2
February	1 527.5	355.9	283.3	380.6	196.4	401.0	867.2	4 011.9
March	1 568.6	364.2	287.5	375.7	210.3	390.0	880.6	4 077.0
April	1 518.6	360.1	296.9	389.5	208.6	417.7	876.6	4 068.0
May	1 526.4	353.6	282.2	387.3	198.4	425.8	884.0	4 057.7
June	1 537.4	343.3	285.2	390.3	203.0	409.0	875.2	4 043.3
July	1 536.0	364.4	278.6	406.1	216.4	409.9	846.0	4 057.4
August	1 557.2	370.3	303.0	436.7	207.6	426.2	826.5	4 127.4
September	1 582.3	364.8	298.2	456.1	211.6	426.3	869.9	4 209.2
October	1 565.5	380.6	304.9	478.5	202.3	421.1	833.6	4 186.4
November	1 567.8	381.3	311.4	441.7	196.1	437.4	826.6	4 162.3
December	1 624.4	373.5	303.6	418.3	199.6	444.7	853.2	4 217.3

(a) The figures shown are derived from a monthly survey of retail establishments. Excludes motor vehicle, boat and caravan dealers, service stations, smash repairers, tyre and battery retailers, bread and milk vendors, footwear repairers and electrical appliance repairers n.e.c. Retail establishments which do not have employees are excluded from the survey. Turnover includes retail sales, wholesale sales, takings from repairs, meals and hiring of goods; and commissions from agency activity (e.g. commissions received from collecting dry cleaning, selling lottery tickets etc.).

Source: Retail Trade, Australia (Cat. no. 8501.0).

12 NEW MOTOR VEHICLE REGISTRATIONS(a), NSW AND AUSTRALIA—SEASONALLY ADJUSTED

	Latest period	New South Wales			Australia		
		Latest figure	Change from prior period	Change from same period prior year	Latest figure	Change from prior period	Change from same period prior year
		no.	%	%	no.	%	%
Passenger vehicles	Dec 99	19 679	6.8	-0.1	52 343	2.3	-8.5
Other vehicles (excluding motor cycles)	Dec 99	4 395	11.5	25.8	12 122	4.9	12.5
Total registrations (excluding motor cycles)	Dec 99	24 074	7.6	3.8	64 465	2.8	-5.2

(a) Includes vehicles (other than those of the defence forces) owned by Government departments and authorities. Excludes mobile plant and equipment, tractors, trailers and non-motorised caravans.

Source: *New Motor Vehicle Registrations, Australia, Preliminary (Cat. no. 9301.0)*.

13 NEW MOTOR VEHICLE REGISTRATIONS(a), NSW—SEASONALLY ADJUSTED

	Passenger vehicles	Other vehicles (excluding motor cycles)	Total (excluding motor cycles)
	no.	no.	no.
1998			
October	19 119	3 320	22 439
November	19 442	3 373	22 815
December	19 698	3 493	23 191
1999			
January	19 048	3 588	22 636
February	18 398	3 354	21 752
March	19 292	3 574	22 865
April	19 504	3 372	22 876
May	18 845	3 184	22 029
June	19 442	3 363	22 805
July	19 633	3 748	23 381
August	17 713	3 449	21 162
September	18 022	3 553	21 574
October	17 819	3 802	21 621
November	18 426	3 942	22 368
December	19 679	4 395	24 074

(a) Includes vehicles (other than those of the defence forces) owned by Government departments and authorities. Excludes mobile plant and equipment, tractors, trailers and non-motorised caravans.

Source: *New Motor Vehicle Registrations, Australia, Preliminary (Cat. no. 9301.0)*.

14 ACCOMMODATION ESTABLISHMENTS(a) NSW AND AUSTRALIA—ORIGINAL

	New South Wales						Australia	
	Unit	Latest period	Latest figure	Change	Change	Latest figure	Change	Change
				from prior period	from same period prior year		from prior period	from same period prior year
			%	%		%	%	
Room nights	'000	Sept qtr 99	3 345.0	7.9	8.7	10 395.6	10.3	7.8
Room occupancy rate	%	Sept qtr 99	61.1	5.5	5.5	60.8	8.2	3.6
Takings	\$'000	Sept qtr 99	375 014	12.7	9.6	1 077 794	13.9	8.0

(a) Licensed hotels with facilities, motels and guest houses and serviced apartments with 15 or more rooms or units.

Source: *Tourist Accommodation, Australia (Cat. no. 8635.0)*.

15 ACCOMMODATION ESTABLISHMENTS(a) SYDNEY AND NSW—ORIGINAL

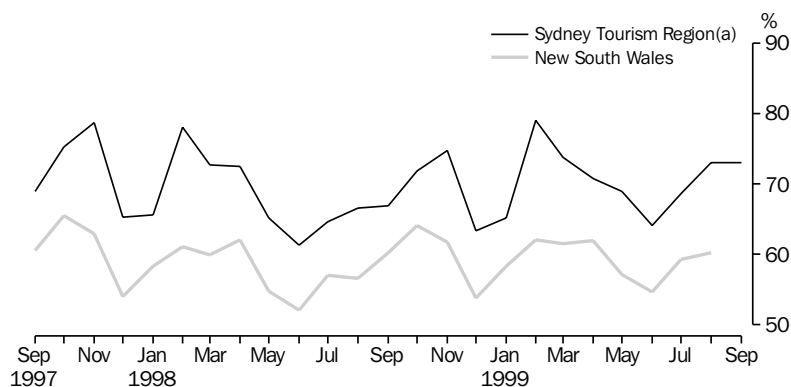
	Sydney Tourism Region(b)			New South Wales		
	Room nights	Room occupancy rate	Takings	Room nights	Room occupancy rate	Takings
	'000	%	\$'000	'000	%	\$'000
1998						
June qtr	1 568.3	66.3	216 500	2 890.3	56.3	316 721
September qtr	1 640.0	66.1	222 944	3 077.3	57.9	342 102
December qtr	1 777.0	70.0	246 125	3 210.5	59.8	359 172
1999						
March qtr	1 828.8	72.5	248 997	3 213.2	60.6	360 674
June qtr	1 731.3	68.0	226 273	3 099.9	57.9	332 669
Sept qtr	1 865.9	71.6	247 543	3 345.0	61.1	375 014

(a) Licensed hotels with facilities, motels and guest houses and serviced apartments with 15 or more rooms or units.

(b) Excludes Gosford, Wyong and Blue Mountains Statistical Local Areas.

Source: *Tourist Accommodation, Small Area Data, NSW (Prod. no. 8635.1.40.001)*.

16 ACCOMMODATION ESTABLISHMENTS,
MONTHLY ROOM OCCUPANCY RATE—ORIGINAL



(a) Excludes Gosford, Wyong and Blue Mountains Statistical Local Areas.

Source: *Tourist Accommodation, Small Area Data, NSW (Prod. no. 8635.1.40.001)*.

17 CONSUMER AND PRODUCER PRICE INDEXES—NSW AND AUSTRALIA

	Unit	Latest period	New South Wales(a)			Australia(b)		
			Latest figure	Change from prior period	Change from same period prior year	Latest figure	Change from prior period	Change from same period prior year
				%	%		%	%
Consumer Price Index (all groups)	1989-90 =100.0	Dec qtr 99	124.7	0.5	1.9	124.1	0.6	1.8
Price index of materials used in house building (all groups)	1989-90 =100.0	Dec qtr 99	124.4	0.6	2.1	121.5	0.8	1.5
Price index of materials used in building other than house building (all groups)	1989-90 =100.0	Dec qtr 99	115.3	0.2	0.2	115.4	0.2	0.2

(a) Refers to State capital city—Sydney.

(b) For the Consumer Price Index this is the weighted average of eight capital cities and for the other two indexes, the weighted average of the six State capital cities.

Source: Consumer Price Index, Australia (Cat. no. 6401.0), Price Index of Materials Used in Building Other Than House Building, Six State Capital Cities (Cat. no. 6407.0), Price Index of Materials Used in House Building, Six State Capital Cities (Cat. no. 6408.0).

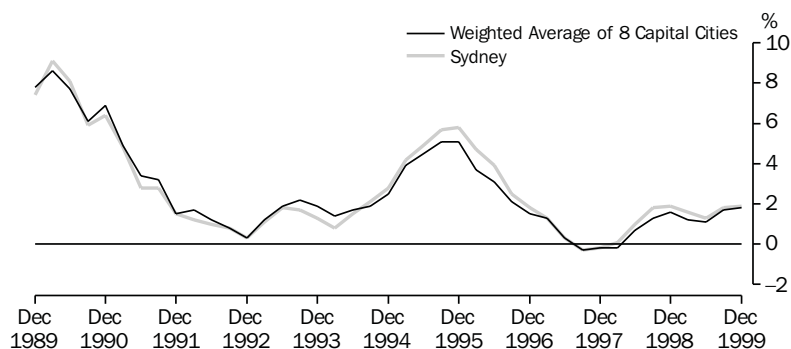
18 CONSUMER AND PRODUCER PRICE INDEXES—NSW(a)

	Consumer Price Index, all groups	Price Index of materials used in house building, all groups	Price Index of materials used in building other than house building, all groups
	1989-90 = 100.0	1989-90 = 100.0	1989-90 = 100.0
1998			
September qtr	121.9	120.8	115.0
December qtr	122.4	121.8	115.1
1999			
March qtr	122.6	122.0	115.2
June qtr	123.0	121.8	115.4
September qtr	124.1	123.7	115.1
December qtr	124.7	124.4	115.3

(a) Refers to State capital city—Sydney.

Source: Consumer Price Index, Australia (Cat. no. 6401.0), Price Index of Materials Used in Building Other Than House Building, Six State Capital Cities (Cat. no. 6407.0), Price Index of Materials Used in House Building, Six State Capital Cities (Cat. no. 6408.0).

19 CONSUMER PRICE INDEX, ANNUAL RATE OF CHANGE



Source: Consumer Price Index (Cat. no. 6401.0).

20 SECURED HOUSING FINANCE COMMITMENTS TO INDIVIDUALS FOR OWNER OCCUPATION—NSW AND AUSTRALIA

	Latest period	New South Wales			Australia		
		Latest figure \$m	Change from prior period %	Change from same period prior year %	Latest figure \$m	Change from prior period %	Change from same period prior year %
Lending commitments for the construction or purchase of dwellings—							
Construction of dwellings	Dec 99	275	-16.5	16.6	951	-11.1	30.4
Purchase of newly erected dwellings	Dec 99	90	-21.9	-6.4	224	-12.8	-4.7
Purchase of established dwellings(a)	Dec 99	1 892	-10.8	40.9	4 415	-7.0	36.2
Refinancing of existing dwellings	Dec 99	413	-10.2	39.9	998	-10.2	31.9
Lending commitments for alterations and additions	Dec 99	105	-12.8	28.4	264	-9.3	21.3
Total lending commitments to individuals for housing(b)	Dec 99	2 669	-11.8	35.5	6 589	-8.3	32.7
Total lending commitments to individuals for housing (seasonally adjusted)(b)	Dec 99	2 789	-3.5	34.8	6 620	-4.2	30.8

(a) Excludes refinancing.

(b) Excludes alterations and additions.

Source: *Housing Finance for Owner Occupation, Australia (Cat. no. 5609.0)*.

21 SECURED HOUSING FINANCE COMMITMENTS TO INDIVIDUALS FOR OWNER OCCUPATION—NSW

	Lending commitments for the construction or purchase of dwellings					Total lending commitments to individuals for housing(b)	
	Construction of dwellings	Purchase of newly erected dwellings	Purchase of established dwellings(a)	Refinancing of existing dwellings	Lending commitments for alterations and additions	Original	Seasonally adjusted
1996-97	2 117	1 234	12 566	4 062	1 221	19 979	..
1997-98	2 625	1 280	14 445	3 573	1 174	21 923	..
1998-99	2 990	1 147	16 761	4 026	1 126	24 925	..
1998							
October	222	95	1 220	302	85	1 838	1 899
November	229	100	1 357	337	91	2 024	1 987
December	235	96	1 343	295	82	1 970	2 069
1999							
January	176	63	1 025	249	74	1 512	2 087
February	239	75	1 223	312	89	1 849	1 969
March	341	106	1 741	407	126	2 595	2 214
April	242	79	1 600	333	97	2 255	2 271
May	276	96	1 787	364	110	2 524	2 387
June	300	116	1 851	418	105	2 686	2 476
July	271	96	1 786	335	93	2 489	2 410
August	286	90	1 800	396	96	2 572	2 525
September	315	101	1 841	394	106	2 652	2 524
October	290	104	1 956	418	110	2 768	2 993
November	r329	115	r2 122	r460	r120	r3 026	r2 889
December	275	90	1 892	413	105	2 669	2 789

(a) Excludes refinancing.

(b) Excludes alterations and additions.

Source: *Housing Finance for Owner Occupation, Australia (Cat. no. 5609.0)*.

	Preliminary Actual		Estimates		July–November	
	1998–99	1999–2000	1998–99	1999–2000	1998–99	1999–2000
	\$m	\$m	\$m	\$m	\$m	\$m
Current receipts—						
Stamp duties	3 947	3 747	1 603	1 847	1 603	1 847
Payroll tax	3 617	3 637	1 469	1 565	1 469	1 565
Land tax	958	859	110	112	110	112
Motor vehicle taxes	1 055	977	444	424	444	424
Gaming and betting	1 419	1 558	500	567	500	567
Commonwealth safety net taxes	1 975	1 989	797	838	797	838
Other taxes	1 251	1 245	504	567	504	567
Commonwealth general purpose grants	4 687	5 162	1 913	2 201	1 913	2 201
Commonwealth specific purpose grants	3 464	3 449	1 379	1 471	1 379	1 471
Dividends/tax equivalents	1 280	1 173	480	388	480	388
Other current receipts	1 316	1 256	491	429	491	429
<i>Total current receipts</i>	<i>24 969</i>	<i>25 052</i>	<i>9 690</i>	<i>10 409</i>	<i>9 690</i>	<i>10 409</i>
Current payments—						
Interest payments	1 393	1 124	478	375	478	375
Superannuation	1 499	1 640	590	659	590	659
Subsidies to non-budget sector—						
Redundancies	n.a.	86	24	33	24	33
Services	n.a.	840	428	422	428	422
Total	990	926	452	455	452	455
Departmental payments—						
Redundancies	n.a.	98	28	27	28	27
Health	n.a.	5 949	2 359	2 439	2 359	2 439
Education(a)	n.a.	5 440	2 140	2 250	2 140	2 250
Law and order(b)	n.a.	1 862	739	768	739	768
Community services	n.a.	1 253	507	532	507	532
Other	n.a.	6 105	2 284	2 301	2 284	2 301
Total	20 406	20 707	8 057	8 317	8 057	8 317
Treasurer's advances(c)	..	160
Less User charges	-2 092	-2 110	-815	-891	-815	-891
<i>Total current outlays</i>	<i>22 196</i>	<i>22 447</i>	<i>8 762</i>	<i>8 915</i>	<i>8 762</i>	<i>8 915</i>
Current result surplus/deficit(-)	2 773	2 605	928	1 494	928	1 494
Capital receipts—						
Commonwealth specific purpose grants	831	784	282	275	282	275
Other capital receipts	437	151	2	2	2	2
<i>Total capital receipts</i>	<i>1 268</i>	<i>935</i>	<i>284</i>	<i>277</i>	<i>284</i>	<i>277</i>
Capital outlays—						
Gross fixed capital payments	2 946	2 798	990	999	990	999
Capital grants	1 102	1 104	342	379	342	379
Less Asset sales	-597	-576	-349	-133	-349	-133
<i>Total capital outlays</i>	<i>3 451</i>	<i>3 326</i>	<i>983</i>	<i>1 245</i>	<i>983</i>	<i>1 245</i>
Capital result surplus/deficit(-)	-2 183	-2 391	-699	-968	-699	-968
Government Finance Statistics result surplus/deficit(-)	590	214	229	526	229	526

(a) Includes Department of Training and Education Co-ordination, Department of School Education, Office of the Board of Studies and TAFE.

(b) Includes Attorney Generals Department, Department of Corrective Services and Police Services.

(c) Expenditure from the Treasurer's Advance is included in the relevant current payments figures.

Source: Financial Statement released by NSW Treasury. Figures may differ from data published in annual ABS publications.

23 ACTUAL PRIVATE NEW FIXED CAPITAL EXPENDITURE, CURRENT PRICES—NSW AND AUSTRALIA, TREND

Type of asset—	Latest period	New South Wales			Australia		
		Latest figure	Change from prior period	Change from same period prior year	Latest figure	Change from prior period	Change from same period prior year
		\$m	%	%	\$m	%	%
New buildings and structures	Sept qtr	998	0.9	-11.4	3 036	-2.3	-20.6
Equipment, plant and machinery	Sept qtr	2 581	0.2	-0.3	7 603	-0.2	-5.1
Total	Sept qtr	3 579	0.4	-3.7	10 639	-0.8	-10.1

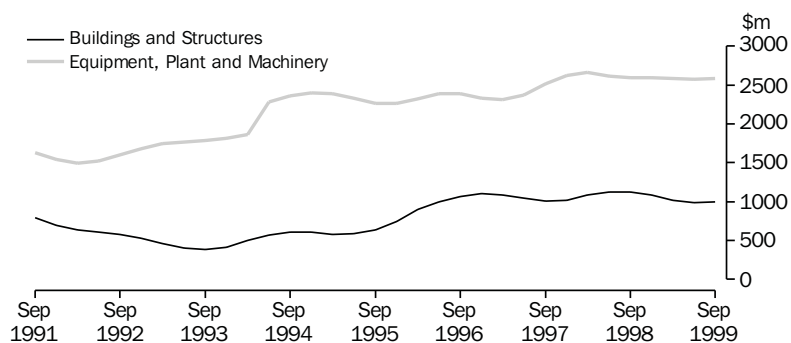
Source: State Estimates of Private New Capital Expenditure (Cat. no. 5646.0).

24 ACTUAL PRIVATE NEW FIXED CAPITAL EXPENDITURE, CURRENT PRICES—NSW, TREND

	Type of asset		
	New buildings and structures	Equipment, plant and machinery	Total
	\$m	\$m	\$m
1998			
June qtr	1 119	2 610	3 729
September qtr	1 126	2 589	3 715
December qtr	1 083	2 589	3 672
1999			
March qtr	1 018	2 588	3 606
June qtr	989	2 576	3 565
September qtr	998	2 581	3 579

Source: State Estimates of New Capital Expenditure (Cat. no. 5646.0).

25 ACTUAL PRIVATE NEW FIXED CAPITAL EXPENDITURE, CURRENT PRICES, NSW—TREND



Source: State Estimates of New Capital Expenditure (Cat. no. 5646.0).

26 INTERNATIONAL TRADE, IMPORTS(a) AND EXPORTS(b)—NSW AND AUSTRALIA

	Latest period	New South Wales			Australia		
		Latest figure	Change from prior period	Change from same period prior year	Latest figure	Change from prior period	Change from same period prior year
			\$m	%		%	\$m
Overseas imports into NSW	Dec 99	3 982	-6.5	14.9	8 900	-8.0	13.8
Total overseas exports(c)	Dec 99	1 561	-0.7	-7.3	7 911	-0.1	6.0
Export commodities and SITC(d) code—							
Meat and meat preparations (01)	Dec 99	93	3.7	10.5	390	-0.4	7.6
Cereals and cereal preparations (04)	Dec 99	115	7.5	-19.1	440	43.2	-16.9
Wool and other animal hair (268)	Dec 99	81	-12.7	21.0	244	0.5	11.9
Coal, coke and briquettes (32)	Dec 99	212	-13.2	-41.8	661	-0.8	-21.7
Iron and steel (67)	Dec 99	69	4.4	-0.9	116	4.0	-5.3
Aluminium (684)	Dec 99	110	5.9	21.1	299	-1.6	5.6
Office machines and automatic data processing machines (75)	Dec 99	31	-15.0	30.6	63	-3.0	-14.1

(a) Figures shown are Customs value.

(b) Figures shown are Free On Board (FOB) values.

(c) Excludes re-exported goods.

(d) Standard International Trade Classification Revision 3.

Source: International Trade database.

27 INTERNATIONAL TRADE, IMPORTS(a) AND EXPORTS(b)—NSW

	Overseas exports of SITC(c) commodities								
	Overseas imports into NSW	Total overseas exports(d)	Meat and meat preparations (01)	Cereals and cereal preparations (04)	Wool and other animal hair (268)	Coal, coke and briquettes (32)	Iron and steel (67)	Aluminium (684)	Office machines and automatic data processing machines (75)
	\$m	\$m	\$m	\$m	\$m	\$m	\$m	\$m	\$m
1996-97	34 229	17 730	784	1 540	859	3 426	968	993	535
1997-98	38 481	19 678	923	1 588	1 061	4 048	1 167	1 224	522
1998-99	42 142	r18 010	948	r1 214	685	3 766	958	1 151	360
1998									
October	3 680	1 526	77	62	74	354	68	105	28
November	3 746	1 547	85	84	73	332	81	91	26
December	3 466	1 683	84	r142	67	364	70	91	24
1999									
January	3 020	1 337	70	102	42	337	68	102	18
February	3 093	1 325	79	99	61	272	70	78	25
March	3 760	1 493	91	112	55	305	83	107	29
April	3 386	1 292	74	95	41	234	56	79	29
May	3 603	1 511	75	83	57	283	103	93	42
June	3 594	1 454	76	111	46	260	59	95	33
July	3 498	1 518	83	108	54	298	45	104	35
August	3 807	r1 538	85	106	50	279	48	96	38
September	4 100	r1 574	r82	94	69	248	59	107	31
October	r3 760	r1 552	90	103	r78	239	53	r105	31
November	r4 260	r1 572	r90	r107	r93	244	r67	r104	r36
December	3 982	1 561	93	115	81	212	69	110	31

(a) Figures shown are Customs value.

(b) Figures shown are Free On Board (FOB) values.

(c) Standard International Trade Classification Revision 3.

(d) Excludes re-exported goods.

Source: International Trade database.

SELF-HELP ACCESS TO STATISTICS

- CPI INFOLINE* For current and historical Consumer Price Index data, call 1902 981 074 (call cost 75c per minute).

- DIAL-A-STATISTIC* For the latest figures for National Accounts, Balance of Payments, Labour Force, Average Weekly Earnings, Estimated Resident Population and the Consumer Price Index call 1900 986 400 (call cost 75c per minute).

- INTERNET* www.abs.gov.au

- LIBRARY* A range of ABS publications is available from public and tertiary libraries Australia-wide. Contact your nearest library to determine whether it has the ABS statistics you require.

WHY NOT SUBSCRIBE?

- PHONE* +61 1300 366 323

- FAX* +61 3 9615 7848

CONSULTANCY SERVICES

ABS offers consultancy services on a user pays basis to help you access published and unpublished data. Data that is already published and can be provided within 5 minutes is free of charge. Statistical methodological services are also available. Please contact:

<i>INQUIRIES</i>	<i>City</i>	<i>By phone</i>	<i>By fax</i>
	Canberra	02 6252 6627	02 6207 0282
	Sydney	02 9268 4611	02 9268 4668
	Melbourne	03 9615 7755	03 9615 7798
	Brisbane	07 3222 6351	07 3222 6283
	Perth	08 9360 5140	08 9360 5955
	Adelaide	08 8237 7400	08 8237 7566
	Hobart	03 6222 5800	03 6222 5995
	Darwin	08 8943 2111	08 8981 1218

POST Client Services, ABS, PO Box 10, Belconnen ACT 2616

EMAIL client.services@abs.gov.au



2130710003003
ISSN 1031-8534

RRP \$16.00